



DS-451
Milk Weigher

Technical Specification

Processor	8-bit Micro-computer
Weighing unit	kg
Display resolution	Max. of 1/6000 (selectable)
Weight Sensor	Load cell
Power supply	230V AC, 50Hz, +/- 10%
Display	Type - VFD (Vacuum Florescent Dsplay)
	Colour - Green
	No. of digit & size - 6 digits, 13 mm height
Key Board	No. of Keys - 6 keys (TACT switch)
	Material of construction - Polyester
Features	- Tare 299.90 kg (upto 50% of machine capacity) - Weight addition (max. 6 digits) - Cumulative weight (total weight)

Factory Options:

Serial interface	RS-232
Battery	6v/4Ah Battery
Combination	kg to litre conversion + Serial Interface

Accessory:

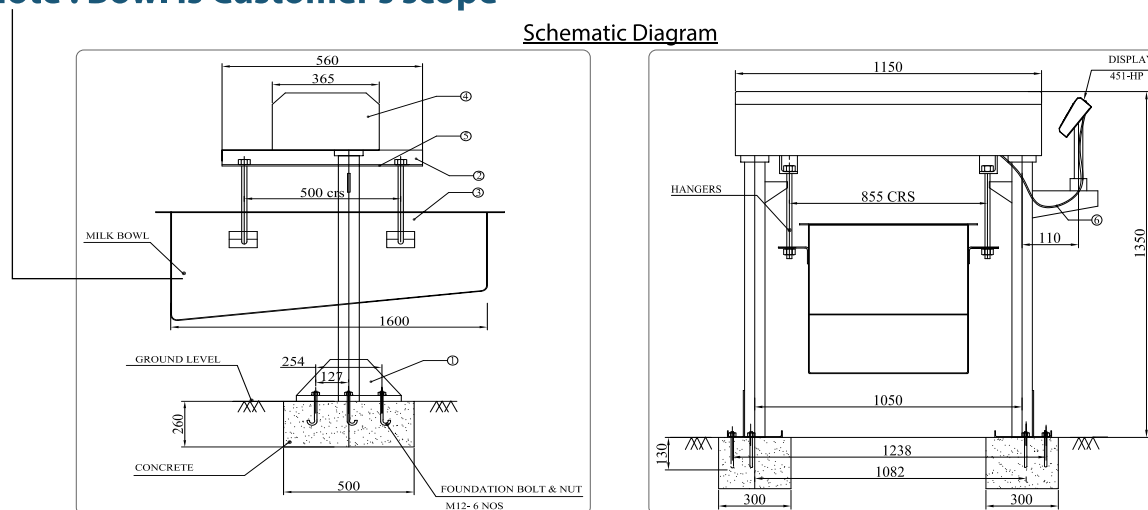
Jumbo Display	25mm Jumbo Display OR
	50mm Jumbo Display

Capacity & Accuracy

Sl No.	Capacity kg	Accuracy g	Overall Size	Frame Material	Load cell
1	600	100	1265 x 625 x 1290	MS	IP-67 Alloy Steel
2	600	100	1150 x 635 x 1350	SS#202	IP-67 Alloy Steel

Note : Bowl is Customer's scope

Schematic Diagram



Essae-Teraoka Pvt. Ltd.

410, 100ft Road, 4th Block,
Koramangala, Bengaluru-560 034
info@essae.com
http://www.essae.com

+91 80 3021 3021
+91 80 3021 3001
1-800-425-3111
0-78488 12346

Essae®

...for Excellence

Your Essae representative

▲ Factories in Bengaluru and Goa ▲ 47 Branch Offices ▲ 250+ Service engineers ▲ 350+ Resellers/Partners

Note: The above model meets the statutory and regulatory requirements as per the provision of legal metrology Act 2009 and legal metrology (General) Rule, 2011. Specifications are subject to change without notice. Other names and logos used are property of respective brands.